



ELK Biotechnology

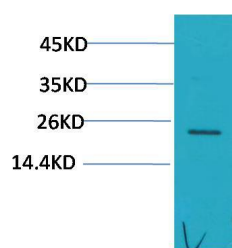
HSPB8/HSP22 Rabbit pAb

Catalog NO.: EA237

For research use only.

Overview

Product name	HSPB8/HSP22 Rabbit polyclonal antibody
Source	Rabbit
Applications	WB
Species reactivity	Human
Recommended dilutions	WesternBlot:1/500-1000 NOTE: Optimal dilutions should be determined by the end user.
Immunogen	Recombinant Protein
Species	Human
Storage	PBS with 0.02% sodium azide and 50% glycerol pH 7.4. Store at -20° C. Avoid repeated freeze-thaw cycles.
Isotype	IgG
Clonality	Polyclonal
Concentration	1 mg/ml
Observed band	22kDa
GeneID (Human)	26353
Human Swiss-Prot No.	Q9UJY1
Cellular localization	Cytoplasm, Nucleus
Alternative Names	Alpha crystallin C chain antibody, Heat shock 22KDa protein 8 antibody, HMN 2 antibody
Background	Heat shock protein beta-8 is a protein that in humans is encoded by the HSPB8 gene. HSPB8 (HSP22) is a member of the small heat shock protein superfamily and the human protein is most closely related to HSP27.



Western blot analysis of Hela with HSPB8/HSP22 Rabbit pAb EA237 diluted at 1:1,000.